

CONCRETE LCDA

Innovative solutions in concrete for interior design

— SLIMBETON® PRESENTATION

CONCRETE LCDA

8 rue Copernic 49240 Avrillé - FRANCE

T. +33 (0) 2 41 33 99 10 F. +33 (0) 9 70 32 65 61

CONTACT@CONCRETE-BETON.COM

WWW.CONCRETE-BETON.COM

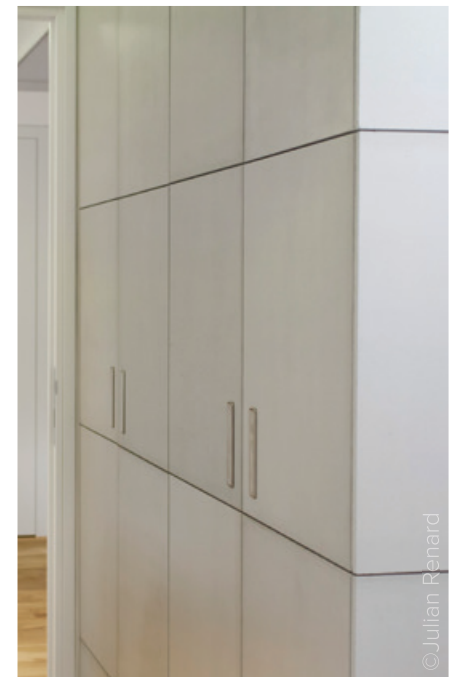


SLIMBETON®

Concrete LCDA is pleased to introduce Slimbeton®: a new generation of lightweight concrete wall cladding. The patent developed by our company in 2015 allows us to offer 7mm thick fibre reinforced concrete cladding. Slimbeton® can also be fitted as decorative panels to dress up furniture, kitchens and any other substrate.

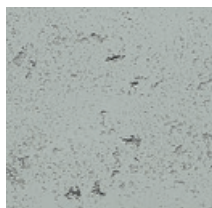
Slimbeton® is available in three ranges: Classic, Scaffolded 2mm and Formwork, in 3 different finishes: light, medium and heavy pitted.

- Competitive price
- Quick installation
- Single dimension



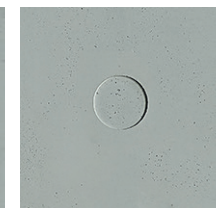
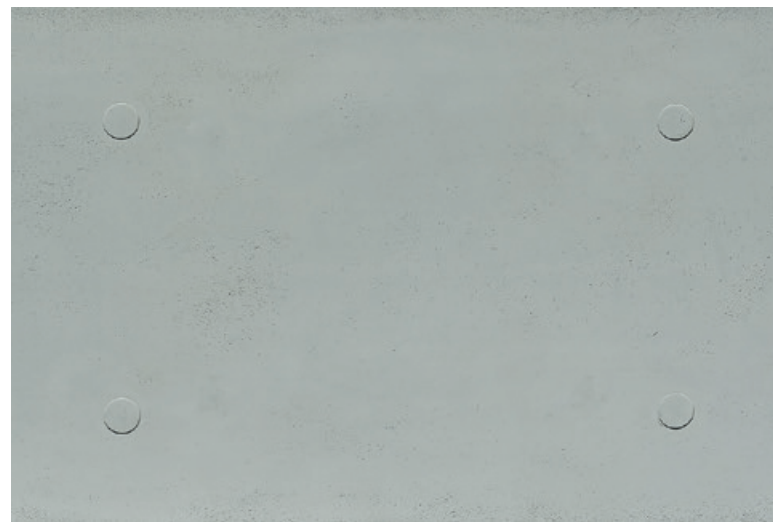
1 – CHOOSE YOUR SLIMBETON®

Choose a design & a size among the following designs



CLASSIQUE
CLASSIC

1200 X 800 MM | 47.24" X 31.49"



BANCHÉ 2MM
SCAFFOLDED 2MM

1200 X 800 MM | 47.24" X 31.49"



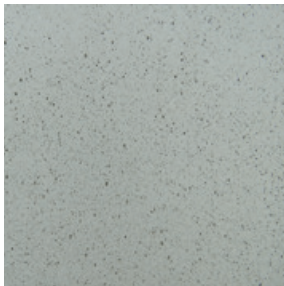
COFFRAGE
FORMWORK

1200 X 800 MM | 47.24" X 31.49"

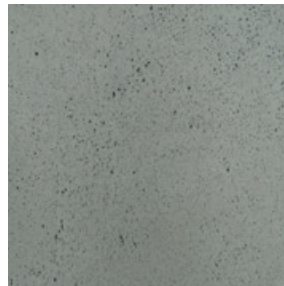
2 – CHOOSE YOUR FINISHES

Choose a color and a pitting (or develop your own color)

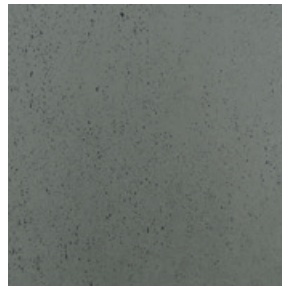
COLORS



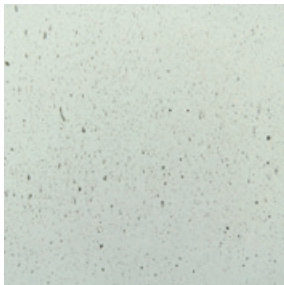
200
Natural Grey



217
Slate grey



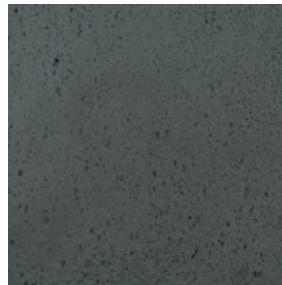
216
Anthracite Grey



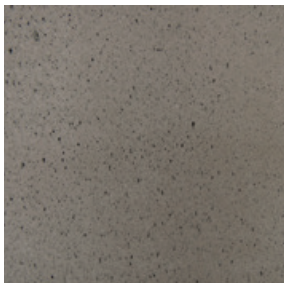
402
White



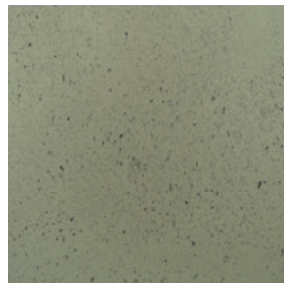
404
Stone



209
Black



205
Brown



269
Luzerne



473
Ouarzazate

FINISHES



Light pitted



Medium pitted





Heavy pitted

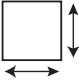
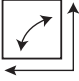
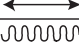







SEALER TREATMENT - TECHNICAL INFORMATION









PANBETON® SLIMBETON® BETON LEGE®

APPLIED AT OUR FACTORY BY OUR DEDICATED TEAM

	APPLICATION	STAIN RESISTANCE	DUST PROTECTION	FINISH	RECOMMENDED FOR	MAINTENANCE
SEALER D <i>Dust + Stain protection</i>	<input checked="" type="checkbox"/> PANBETON® <input checked="" type="checkbox"/> SLIMBETON® <input checked="" type="checkbox"/> BETON LEGE®	★ ★ ☆ ☆ ☆		Mat	Walls and ceilings with high stain risk	Cleaning with a damp microfiber cloth and a neutral cleaning product (non-corrosive) type black soap
SEALER S <i>Reinforced protection sealer</i>	<input checked="" type="checkbox"/> PANBETON® <input checked="" type="checkbox"/> SLIMBETON® <input checked="" type="checkbox"/> BETON LEGE®	★ ★ ★ ☆ ☆		Satin	High traffic areas, Liquid splashing risk	

TECHNICAL DATA

	DIMENSIONS	1200 x 800 mm 47.24" x 31.49 " (General tolerance +/- 3 mm 0.12")
	ORTHOGONALITY	+ /- 1.0 %
	SURFACE AREA	+ /- 1.0 %
	THICKNESS	7 mm 0.28"
	WEIGHT	12 Kg 26.45 lbs (+/- 20 %)
	WEIGHT PER SQM	12,5m² 27.56 lbs /m²
	COMPOSITION	Fibre-reinforced concrete
	SEALER TREATMENT	As an option (water-borne acrylic base)
	MOUNTING & BONDING	Glue Hybrifix 550 DEN BRAVEN
	SUBSTRATES	Is glued to all substrates (plasterboard, bricks, breeze-blocks, etc.)

	CUTTING	Diamond blade (continuous-rim). outer corner possible, drilling with diamond- coated hole saw...
	FIRE CLASSIFICATION	> A1 & Euroclass B-s1, d0 > ASTM E84 : Class A Smoke index : 0 Flame spread index : 0
	HEAT RESISTANCE	Up to 60°C Up to 140 °F
	THERMAL SHOCK	Resistant
	LIGHT RESISTANCE	No impact
	VOC CLASSIFICATION	A+
	ACOUSTIC	Neutral
	EXCLUDED	Exterior, floor, shower stall. Not suitable for direct and continuous contact with water.

COMPOSITION

Slice view



7 MM | 0.28"
FIBRE
CONCRETE